

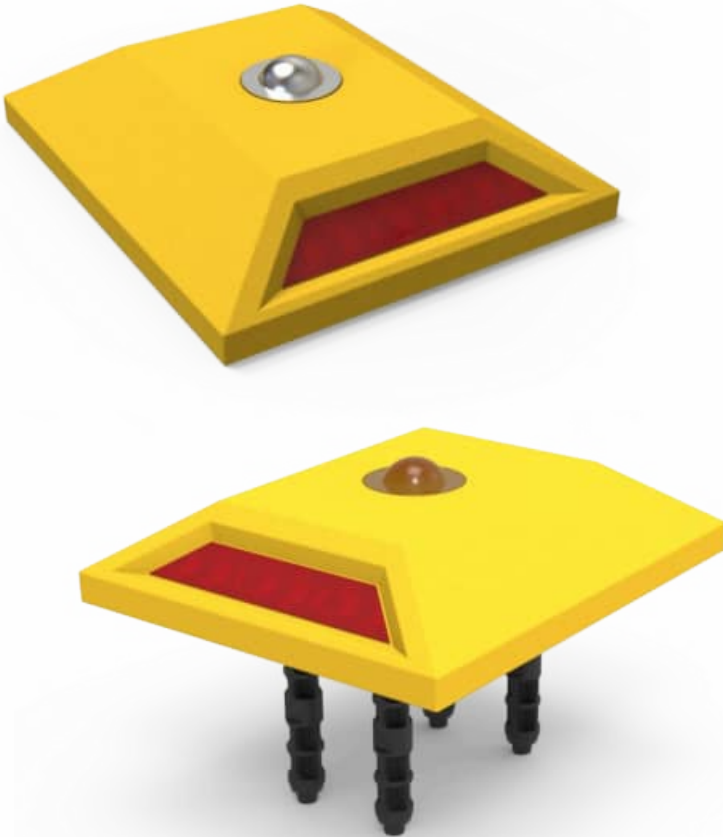
25 ROAD STUD

Code: VIA-25

We have taken road safety
to the next level!

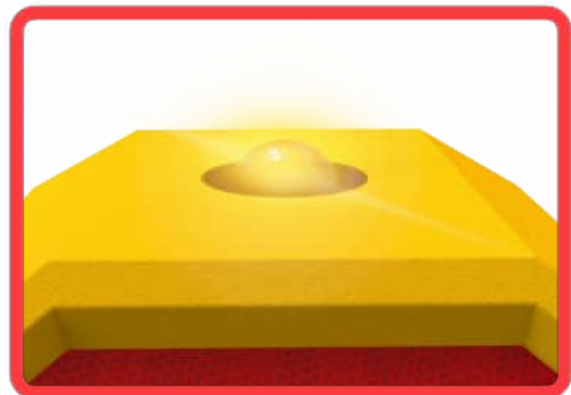
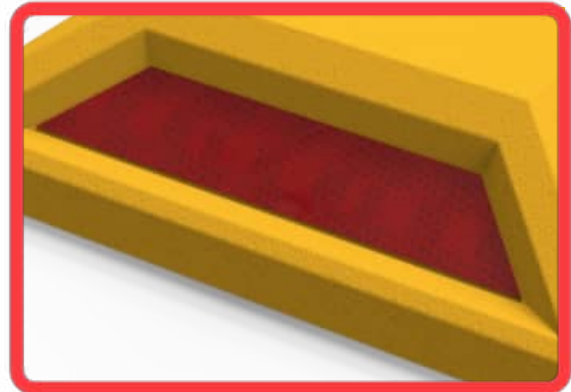
WHAT IS A ROAD STUD?

- A simple and accessible solution to enhance safety and traffic organization on roads with bike lanes.
- These devices feature optimized height for improved visibility on any roadway.
- They form an integral component of horizontal traffic signaling, installed directly on the pavement to guide traffic, delineate lanes, and support other traffic control measures.
- Practical and effective, they quickly capture drivers' attention with reflective surfaces that efficiently return vehicle headlights.
- Equipped with the City Lux system at the upper section, these devices amplify the reflection of vehicle headlights, generating signals that effectively warn approaching drivers.



Features

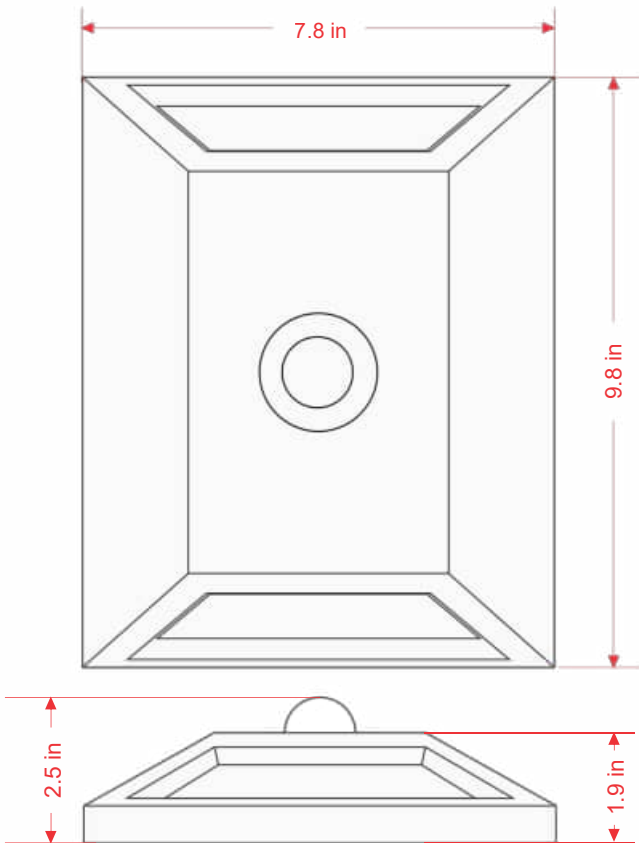
- **Safe and Efficient Design:** Single-piece, pyramid-shaped construction.
- Manufactured from yellow or green high-strength polymer, ensuring durability and dimensional stability even under extreme temperatures, molded in one piece through intrusion molding, with built-in UV protection.
- Resistant to moisture, corrosion, and weather changes; height designed to avoid tire damage or interference with vehicle circulation.
- Equipped with two red or amber reflective elements significantly enhance nighttime visibility.
- Easy to install with a 4-bolt high-strength threaded system, ensuring maximum stability and preventing detachment, without the need for additional metal anchors



25 ROAD STUD

Code: VIA-25

Dimensions and other measurements are nominal and may vary by $\pm 2\%$



Dimensions

Total	Length: 9.8 in
	Width: 7.8 in
	Height: 1.9 in
Reflective element	Red or white

Installation

- The 25 ROAD STUD works as a template for accurately marking the four boreholes.
- Drill the holes to a depth of 6" using a 1/4" drill bit. Apply soapy water as a lubricant when inserting the bolts into the 25 ROAD STUD to ensure optimal grip.
- Once all six bolts are in place, fill the boreholes with epoxy, position the component, and gently adjust it with a rubber mallet until it sits flush with the floor surface.

Recommendation: Apply soapy water when positioning the bolts on the channelizer to simplify adjustment.



Anchoring system

