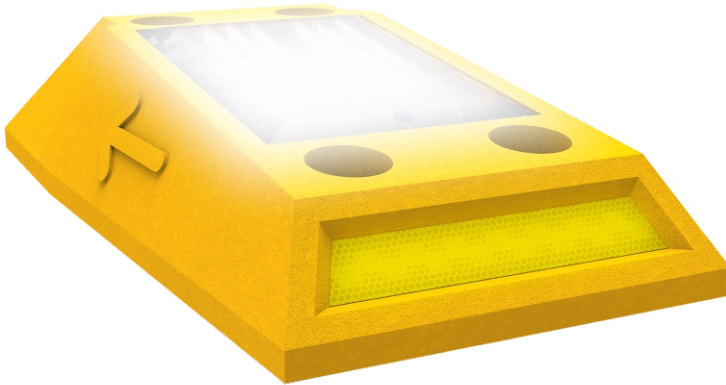


# CONFI-BICI LUMINOUS STUD

Code: VI-COBI-L



Leader don't follow steps  
... marks the way



## WHAT IS THE CONFI-BICI LUMINOUS STUD?

Lighten channelizer for mark protected bicycle lanes on any road.

Commonly used for mark bus, trolley-bus or special rails.

Also to warn drivers about traffic merges or crossings.

## FEATURES

- Elegant design of a pyramidal irregular prism with perfect height and without sharpened edges so it's harmless for car tires.
- Low density polyethylene composition for better performance and resistance to dilatation (even in extreme temperatures), to attrition and also UV protected.
- Manufactured in one piece.
- Two reflective zones on front and rear faces.
- Bright yellow for better visibility.
- Easy installation and easy removal in case of any change on rails lines. Sometimes cyclists need a new entrance and new exit in bicycles delimited lanes.

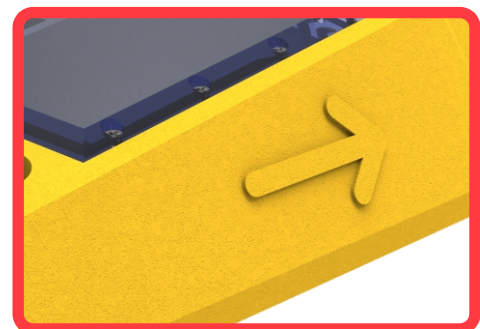
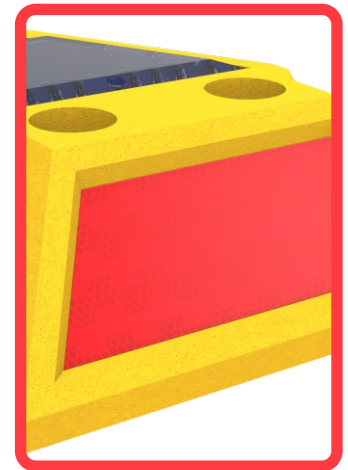
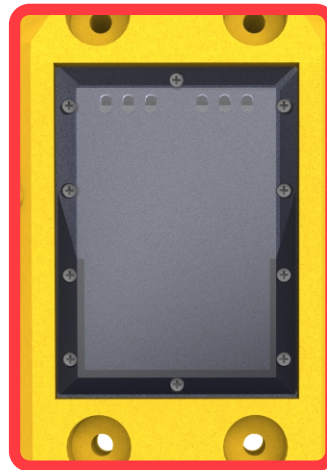
### ILLUMINATION SYSTEM OPERATION:

The CONFI-BICI LUMINOUS STUD has a solar intelligent illumination system composed by:

Solar cell with 6 ultrabright led cluster cover with acrylic mica for protection and better light reflection.

System feeds by a battery pack inside that charges during day sunny hours and turn on lights when dark begins.

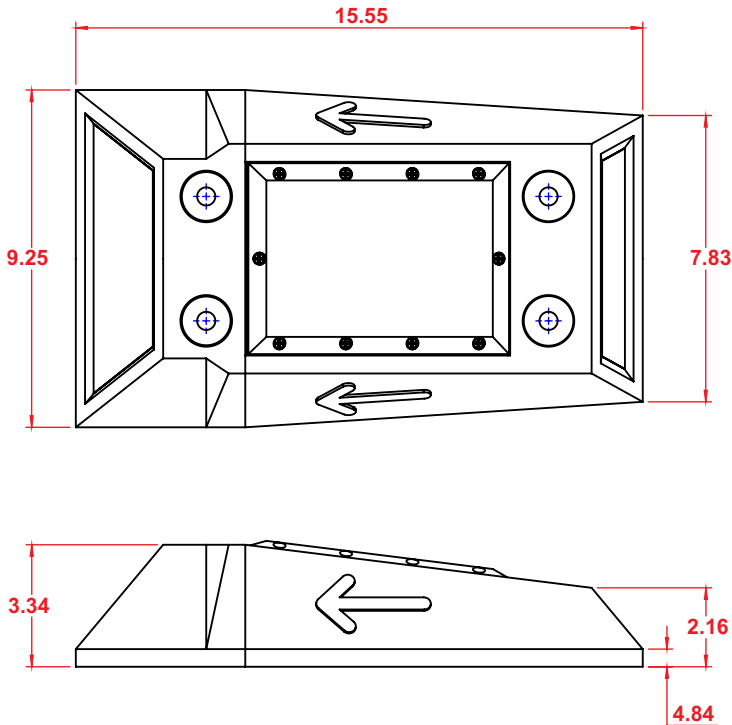
- Number luminous stud markers on same lane communicate themselves for synchronize its operation to get better results via radio frequency.



# CONFI-BICI LUMINOUS STUD

Code: VI-COBI-L

Measures are nominal and can vary, between +- 2%.



## Measure

### Total

Length: 15.55 in.  
Front Width: 9.25 in.  
Rear Width: 7.83 in.  
Frontal height: 3.34 in.  
Rear height : 2.16 in.

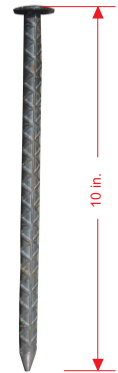
### Reflectives

Amber and red

### Leds color:

Amber, red or white

Must use  
epoxic  
glue



**Anchorage in asphalt**  
Steel nail  
(1/2" x 10 in.)



**Cement Anchorage**  
"Extralarge" Tacket  
(3/4" x 5.51 in.)  
"Ultrafix" Screw  
(3/8" x 5.9 in.)