

# LEADER 60 LANE SEPARATOR

Code: CAN-L-60

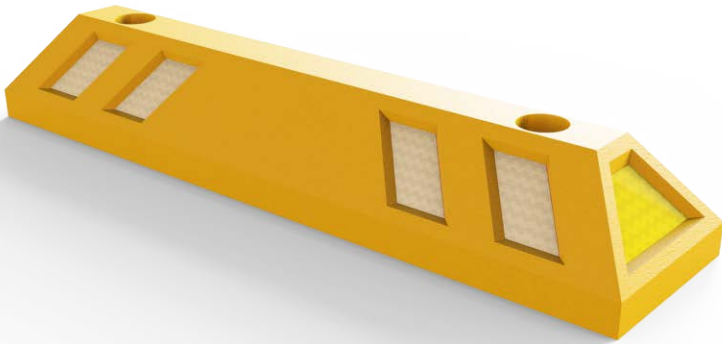
*A leader doesn't follow steps, he marks the way.*

## WHAT'S A LEADER 60 LANE SEPARATOR?

It's part of the horizontal road signs placed over the road surface and works like a traffic channelizer and a lane separator, among other functions. It's useful and practical since it draws the driver's attention with its reflective.

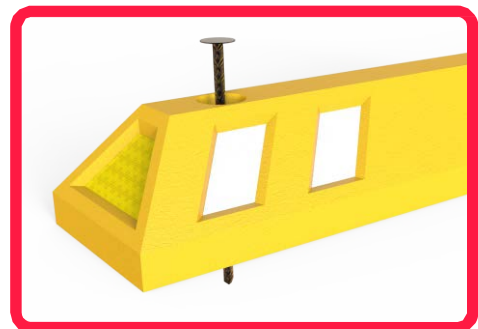
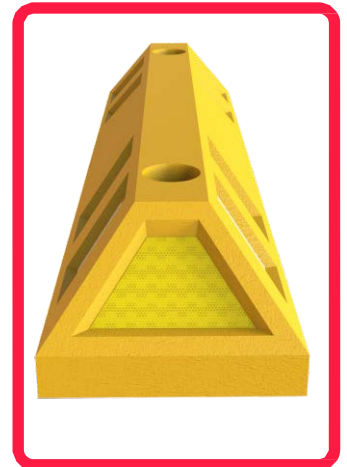
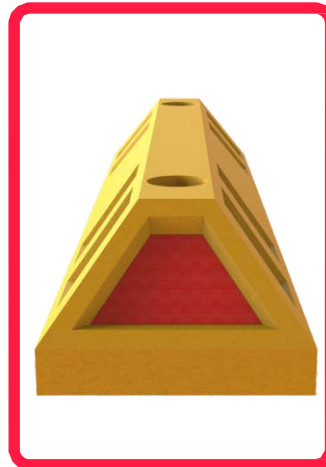
Implementing lane separators on roads used by vehicles requires security that guarantees minimum risk for pedestrians and drivers.

The function of this lane separator is to signal drivers the limits of a zone or the detour route.



## Features

- The material of this outstanding lane separator is polyethylene, a material that doesn't damage vehicles.
- Line colors: Yellow and green of great durability.
- It has UV protection and resistance to oils and extreme temperature changes.
- Made in one piece with 100% recycled material.
- The design includes 10 reflective stripes between the sides and ends.
- The lane separator is a perfect safety device for restricted zones or detours and includes ten reflective stripes making it more efficient at night.
- It's easy to install, transport and stack; it has a compact design; it stacks up, which allows it to save space; and it's light, which makes easy and safe installations.
- It includes two boreholes for easy installation with nails (not included).

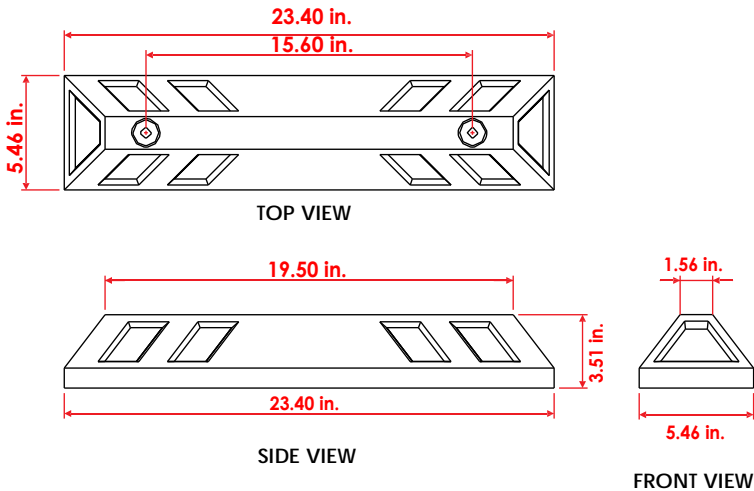


*The images are merely representations of the model.*

# LEADER 60 LANE SEPARATOR

Code: CAN-L-60

Volumes, dimensions, and other measures are nominal and may vary by approximately 2%.



## Measures

<b>Total</b>	Length: 23.40 in. Width: 5.46 in. Height: 3.51 in.
<b>Reflective:</b>	Sides and ends
<b>Reflective color:</b>	White or amber

## Installation

1. Mark the boreholes using the Lane Separator as a template.
2. Bore into the holes with a drill and a 1/2" drill bit at a depth of 8".
3. Fill the borehole with epoxy glue.
4. Place the lane separator and insert the nails.
5. Carefully pound the nails using a hammer.

*Note:*

### EPOXY GLUE PREPARATION:

1. Mix equal amounts of the "a" and "b" formulas.
2. Stir until they are well combined.
3. Since you can only use it once, remove the remaining epoxy glue once the job is finished.

## Suggested use



*The images are merely representations of the model.*



**Steel nail**  
(1/2" x 9.75 in.)