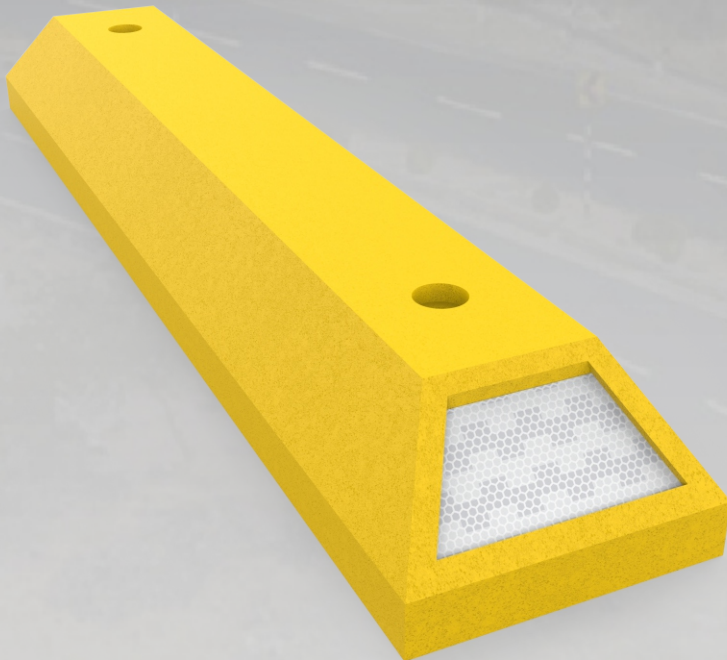


The 81 Channelizer

Code: CAN-81



Leader don't follow steps
... marks the way

WHAT IS THE 81 CHANNELIZER?

Limiter designed for special lanes, like the protected bicycle lanes.

WHAT IS THE 81 CHANNELIZER USE?

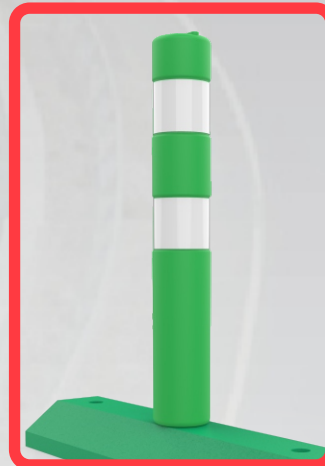
Ideal for channelize and limit a bicycle lane, also the traffic on avenues and streets.

RECOMMENDED USE

As a special lane channelizer with post or/and with a solar light.

FEATURES

- Special item for install in case of traffic counter-flows, two way avenues or in the bicycle protected lanes.
- Its main function is limit special lanes.
- A solid item manufactured in one piece with medium density polyethylene and with two augers for a strong anchorage.
- Lines colors are green, yellow and white.
- Rounded ends and no sharpen edges to avoid any harm to cyclist, vehicles, drivers or fauna.
- Great visibility from a long distance thanks to the reflectives in both ends.
- Designed for an easy transportation because is lightweigh.
- The channelizer offer the option to carry on top a Poliflexy® 66 Bollard (code: ITO-PF-66), a very flexible post capable to resist 10,000 vehicle impacts and recover its vertical.
- The bollard with the channelizer brings a feeling of safety in cyclist.
- Easy installation and easy change of placement in case of need also. It can remove it fast if its necessary to open an exit in the lane or for to give a better room between channelizers, always thinking in cyclist and other users.
- Recommended installation with two steel nails of 5.90 in. drowned and fixed with glue according to the floor.
-



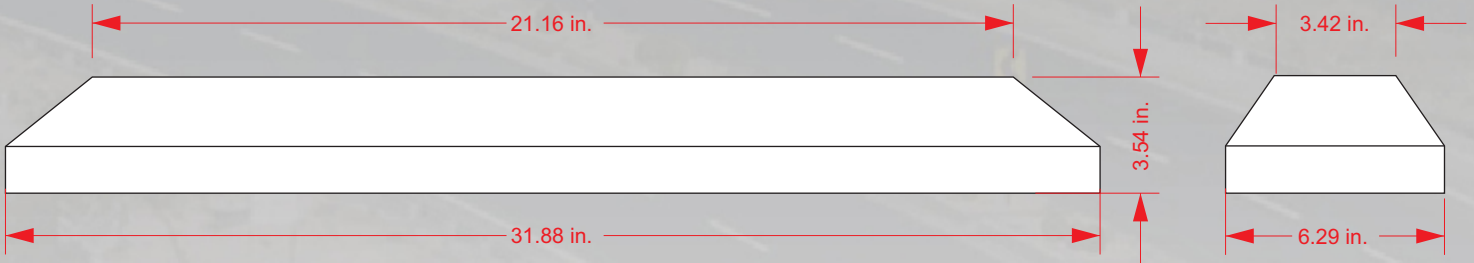
With Poliflexy® 66 Bollard
(code: ITO-PF-66)



The 81 Channelizer

Code: CAN-81

Measures are nominal
and can vary,
between +/- 2%.



Measure

Total

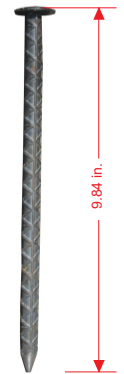
Length: 31.88 in.
Width: 6.29 in.
Height : 3.54 in.

Reflectives

Amber, White or red



with
epoxic
resine



Anchorage on asphalt
Steel nail
(1/2" x 9.84 in.)