

A leader doesn't follow steps, **he marks the way.**



WHAT'S A LANE SEPARATOR?

This lane channelizer is specially designed to channel traffic flow avoiding lane splitting from vehicles.

The Boomerang 140 Lane Separator has multiple uses, like separating exclusive bike or bus lanes, a central lane separator in contraflow lanes, and delimiting entrance and exit junctions on highways or speed lanes.

The height of 5.46 in. makes it a restrictive element that avoids lane splitting into lanes or specific areas.

Features

- Made of 100% recycled medium-density polyethylene in one piece.
- Since it has integral color with UV protection, it doesn't discolor.
- High resistance to impacts, practically unbreakable.
- Weather resistant and maintenance-free.
- It has seven boreholes that guarantee a better fastening.
- Easy to install:
Concrete: Extralarge polypropylene anchors of $3/4" \times 5.46$ in. and Ultrafix screws of $3/8" \times 5.85$ in.
Asphalt: Steel nails of $1/2" \times 9.75$ in.
- It has the option of adding 5 Engineer Grade Prismatic reflective stripes.
- It doesn't have corners or sharp edges that could harm the user.



BOOMERANG LANE SEPARATOR 140

Code: C-BG-50-14

MEASURES

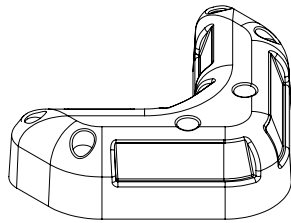
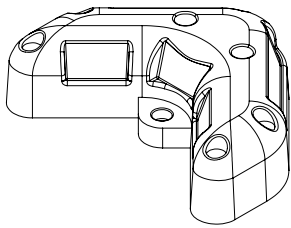
- * Length: 14.23 in.
- * Width: 19.30 in.
- * Height: 5.46 in.

COLORS:

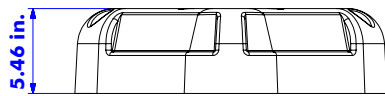
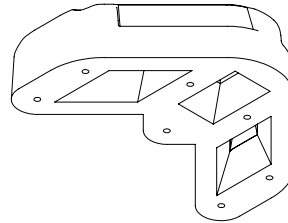
- * Green, yellow, and black.

REFLECTIVES:

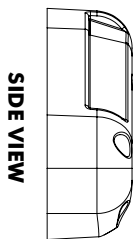
- * White, amber, and red.



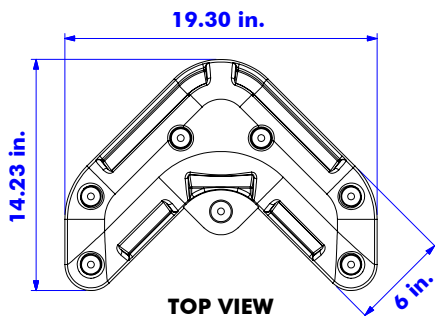
ISOMETRIC VIEW



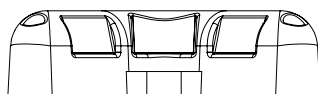
FRONT VIEW



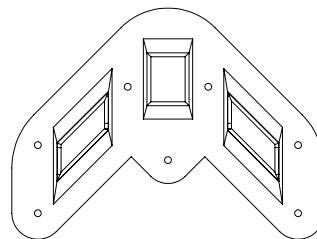
SIDE VIEW



TOP VIEW



REAR VIEW



LOWER VIEW



Installation in asphalt
Steel nail (1/2" x 9.75")



Concrete anchoring
Extralong concrete anchor
(3/4" x 5.5")
Ultrafix screw
(3/8" x 5.9")