

# Greece Bollard + Dome-Sphere

Code: PIC-GE-R / PIC-GC-R

Leader don't follow steps  
... marks the way

## WHAT BOLLARDS ARE?

Excellent traffic equipment that has a double use: as ornament and as protective item for citizens.

Its main function is to divide the traffic flow and the pedestrian or bicycle zones.

Suggested use in public places as well as in private areas.



PIC-GE-R



PIC-GC-R

## FEATURES

- Decorative and modern bollard and also traffic aligner in two models **PIC-GE-R** (spherical top) y **PIC-GC-R** (cupole top).
- Help to create a safe and high standard environment.
- Made out in medium density polyethylene.
- Line color: granite, black, gray and green, more on demand with your order for more than 200 pieces.
- Our bollards are eco-friendly on various aspects.
- Hard resistance to weather harshness including UV rays protection.
- No corrosion, no attrition, no dirty absorption.
- No maintenance needed.
- Are heavy impact resistant.
- Both models can be used in hollow version or filled with cement for a better performance.
- Easy installation.
- Drowned anchorage on any plane ground.

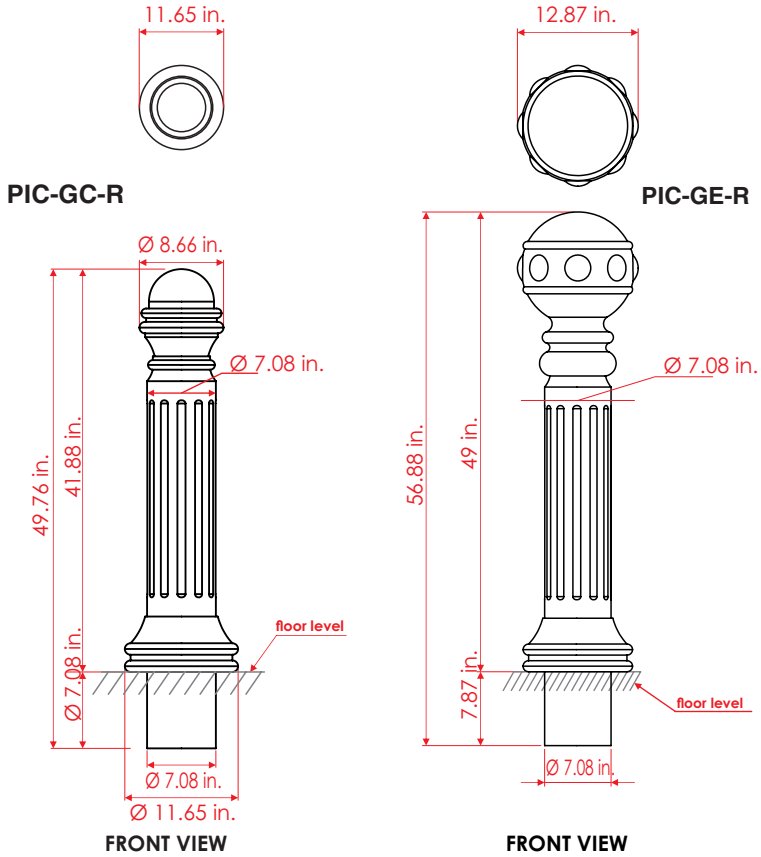


*Images are merely illustrative models*

# Greece Bollard + Dome-Sphere

Code: PIC-GE-R / PIC-GC-R

Measures are nominal and can vary,  
between +- 2%.  
All dimensions in inches and ounces & lb.



## Measure

**PIC-GE-R**

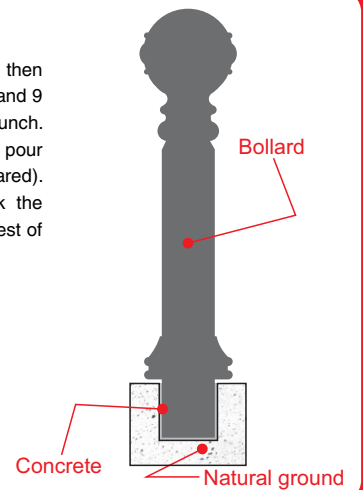
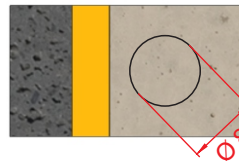
Total diameter: 12.87 in.  
Functional height: 49 in.

**PIC-GC-R**

Total diameter: 11.65 in.  
Functional height: 41.88 in.

## Anchorage

First mark the auger ubication, then perforate a hole 10 inches diameter and 9 inches depth with a perforating punch. Clear of dirt the hole as possible and pour the cement mix (previously prepared). Insert just the bollard base, check the level (no more, no less) and fill the rest of the hole to get a good cimentation.



## Suggested use

