

Bollard Elegance 101

Code: PIC-EL-101

Leader don't follow steps
... marks the way

WHAT A BOLLARD ELEGANCE IS?

Shock and run-ins resistant beautifier, is not only a color post, but a traffic marker with the option of internal illumination for a better visibility to install on any plane surface.

Its main function is to divide the traffic flow and the pedestrian or bicycle zones, so is a safety delimitator.

Suggested use in rows circling the forbidden area, public places as well as in private areas, avoiding the vehicles pass or park-in.



FEATURES

- Modern, decorative & esthetic Bollard with elegant design.
- Special flexible material supports up to 200 run-ins.
- Help to create a safe and high standard environment.
- **Made out in polyflexy®.**
- No maintenance needed. Easy handle.
- U.V. ray resistant, no decoloration.
- Extended durability.
- 2 aluminium clamps for fix on floor.
- With reflective strip for a bettered visibility during dark hours.

• ELECTRIC POWERED ILLUMINATION SYSTEM

The illumination is provided by a led cluster of white light at 3,000 kelvin with a plastic cristal cover (only consumes 7 watts).

- Prepared to be feed by the electric current net of 110-240 Volts (with the option to change to solar type).
- Has an internal vessel that can't be damaged in case of collision.
- The vessel as a rubber seal to prevent water leaks.
- Anchorage with drill screw and expansive tacket (not included).

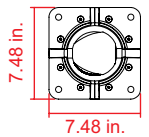
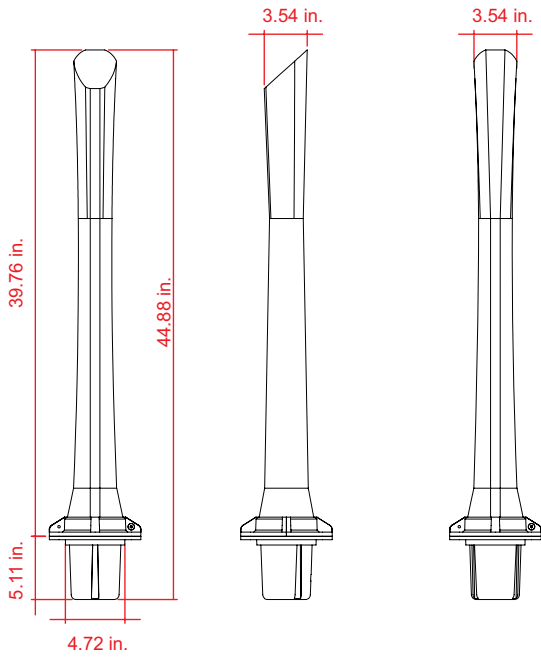
• SOLAR ILLUMINATION SYSTEM

- Composed by a (150aH) photovoltaic cell and a (110aH2) battery pack connected to an arrangement of charger-inverter (12v-20A-200W) that guarantees operation in a signalasing point with 6 bollards for 8 to 10 hours with a full sun charge.



Bollard Elegance 101

Code: PIC-EL-101



Clamp

Measure

Total	Height: 39.76 in. Base width: 7.48 in. Top Ø: 3.54 in.
Reflective:	Height: 39.76 in. Width: 0.78 in.
Reflective color:	Amber, White
Weight :	6.47 lb.

Mark the auger localization using the base as a template.

If your bollard is the lighten type, then the hole must be about $\text{Ø } 6" \times 5"$. Dig it with a perforating pinch to insert the lamp vessel.

