

Barrier S-2016

Code: S-2016

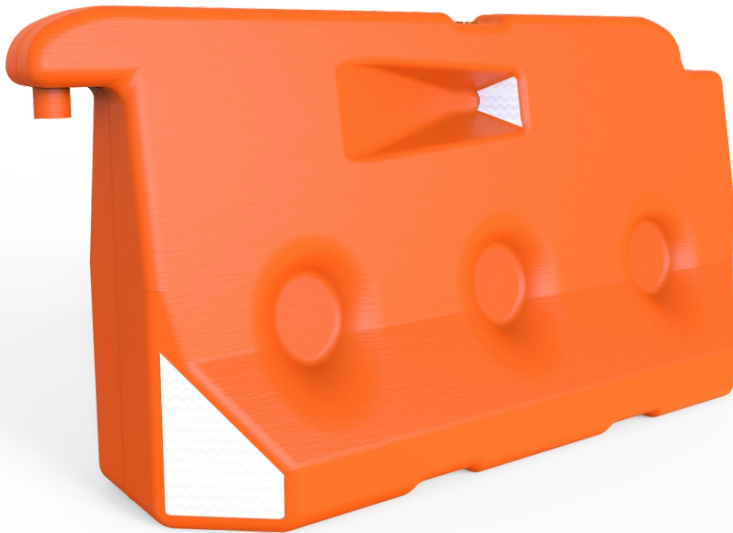
Leader don't follow steps
... marks the way

WHAT IS THE BARRIER S-2016?

Traffic safety barrier, modern and versatile. It can be filled with water or sand or can be used empty, easy handle.

Ergonomic design and made out in one piece.

Recommended use in rows of barriers, contributing to a more safe environment.



FEATURES

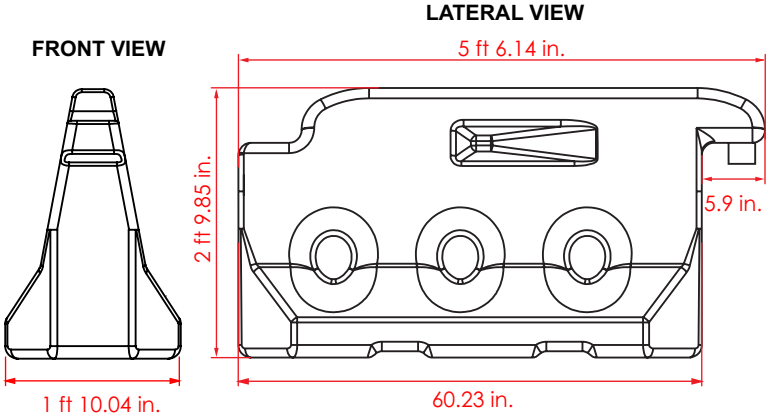
- The Barrier S-2016 is effective in delimit, signalise and provide safety in works zone and in-construction sites.
- Blown in high molecular weight polyethylene.
- Made out in a unique piece, so it has a long life forcoming with hard resistance to weather harshness including UV rays protection.
- With no sharpen corners and rounded ends for avoid any damage to people, vehicles or fauna.
- If you want to increase weight and strenght: Let's take the option and fill-in with water or sand by tons! (Not included).
- The assembly system -as in all our barriers- allow you to bond various elements in a large inseparable arrangement enhancing safety and security.
- The angled forms with reflective film add more visibility to the item.
- On inferior zone includes a trapezoidal cavity oriented to drivers sight all time, so it seeable coming from a short or a long distance.
- As part of it's reasoned geometry the shape has two archs on bottom to use as a waterflow pass or works for transport the barrier with forklift.



Barrier S-2016

Code: S-2016

Measures are nominal and can vary, between +/- 2%.



Measure	
Total	Length: 5 ft 6.14 in. Height: 2 ft 9.85 in. Width: 1 ft 10.04 in.
Reflective:	Prismatic Engineering (Optional)
Reflective Color:	white

