

RED BIHW BAG

CODE: BOLSA ROJA LRO

DESCRIPTION

This Red BIHW Bag is perfect for the safe handling of infectious biological waste, this bag provides high resistance to punctures and leaks to minimize risks. Featuring polymer material, the bag ensures durability and safety in hospitals, laboratories, and clinics. Available in multiple sizes, it delivers a reliable solution for the safe and proper collection and disposal of this type of waste.

The design complies with required safety standards to prevent spills and contamination, contributing to a cleaner and safer environment. Easily identifiable by the red color, the bag allows proper waste separation, optimizing handling and transport efficiently.

The bag is intended for operations requiring controlled incineration, ensuring clean and safe combustion. The chlorine-free construction and very low heavy metal content significantly reduce harmful emissions during incineration.



FEATURES

- Features a secure sealing system that prevents leaks and spills, reducing the risk of exposure for healthcare personnel and safeguarding the environment
- Available in multiple sizes to accommodate different collection requirements in hospitals, clinics, and laboratory settings
- Manufactured in compliance with applicable safety and environmental regulations
- The bag's bright red, high-visibility color allows for immediate identification and proper hazardous waste segregation
- Lightweight and flexible construction ensures efficient handling during daily operations



Complies with

**NOM-087-SEMARNAT-2002
STANDARD**



Biological
waste only



Hazardous
waste only



Sharp object
protection

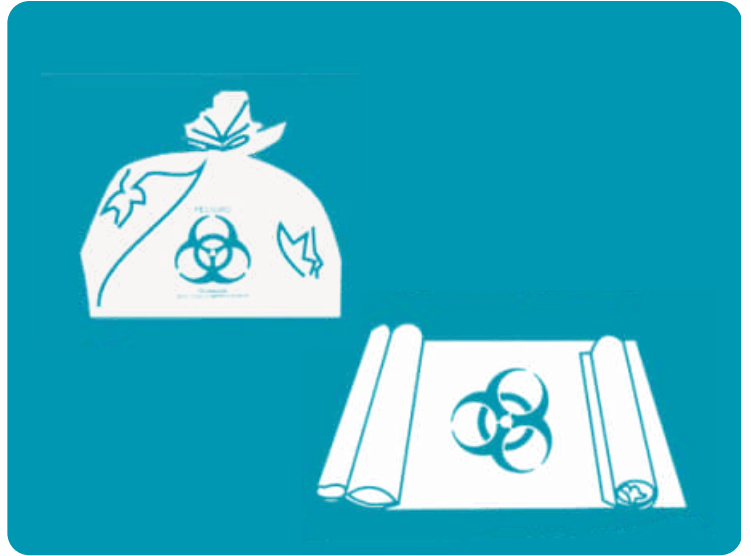


Controlled
incineration





DIMENSIONS

Model	Dimensions	Capacity	Gusset
LRO-20-200	7.8 x 11.8 in	2.2 lb	NO
LRO-30-200	11.8 x 15.7 in	5.5 lb	NO
LRO-50-200	18.1 x 19.7 in	22 lb	YES
LRO-55-200	21.6 x 23.6 in	39.7 lb	YES
LRO-60-200	23.6 x 23.6 in	66.1 lb	YES
LRO-61-200	23.6 x 31.5 in	61.7 lb	YES
LRO-90-200	27.6 x 35.4 in	66.1 lb	YES
LRO-110-200	30.7 x 43 in	75 lb	YES
LRO-120-200	35.4 x 47.2 in	86 lb	YES
LRO-122-200	39.3 x 47.2 in	92.6 lb	YES



MATERIAL COMPOSITION

	Chlorine-free
	Total heavy-metal content: ≤ 1 ppm

DESIGN & USE

- The Red BIHW Bag is designed to ensure safe and efficient handling of biohazardous infectious materials, providing secure containment to prevent contamination or exposure. The durable polymer construction prevents leaks and punctures, protecting both healthcare workers and the environment

Safety begins with
proper waste handling

RED BIHW BAG